

**Research Article**

**VOLTAGE AND POWER STABILITY ANALYSIS OF POWER SYSTEM  
USING GA-FUZZY BASED CONTROLLER OF SVC DURING  
CONNECTION OF DOUBLY FED INDUCTION  
GENERATOR TO NETWORK**

**\*Mohammadi Rozbahani A.<sup>1</sup>, Adinehvand K.<sup>2</sup> and Azadbakht B.<sup>2</sup>**

<sup>1</sup>*Department of Electrical Engineering, College of Engineering, Borujerd Branch, Islamic Azad  
University, Borujerd, Iran*

<sup>2</sup>*Department of Medical Radiation Engineering, College of Engineering, Borujerd Branch, Islamic Azad  
University, Borujerd, Iran*

*\* Author for Correspondence*

**ABSTRACT**

This paper deals with voltage and power stability improvement of wind energy grid connected power system. The wind generator model considered is a variable speed doubly fed induction generator model. Doubly Fed Induction Generator (DFIG) is widely utilized in large wind power plants. Therefore the dynamic behavior of DFIG wind turbines is necessary to be studied.

Under grid connected mode, DFIGs not only to contribute active power generation but also to the reactive power independently but due to limited reactive power capability and remote location of wind turbines it cannot provide the sufficient reactive power support without any external dynamic reactive power compensation device. As stated that the problem of voltage instability can be solved by using dynamic reactive compensation. This research presents the impact of Static Var Compensator (SVC) on the dynamic stability of power system connected to DFIGURE On the other hand, the parameter tuning of FACTS controllers is an important problem as the stabilizing effect will depend on the gain of the controllers. Therefore in this paper the optimizing of Fuzzy based SVC controller using genetic algorithm is presented and discussed.

**Keywords:** *Voltage Stability, Genetic Algorithm, Fuzzy Approach, Wind Turbines*

**INTRODUCTION**

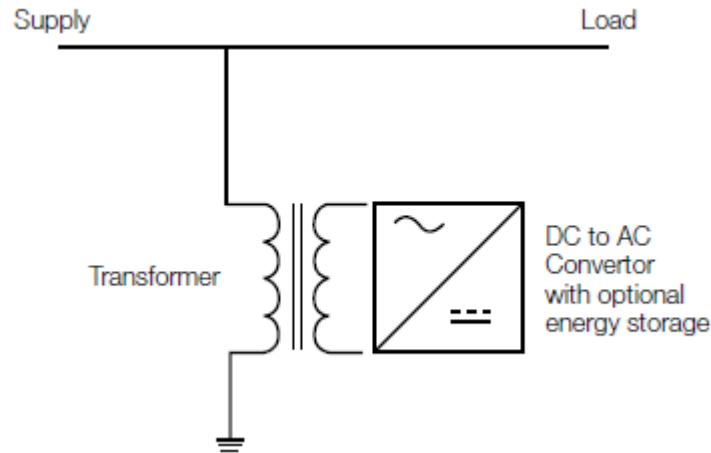
During the last decade, wind power has been the world's fastest growing energy source (Mehdi *et al.*, 2012) and many large WFs have been installed and integrated into power systems, caused the share of wind power to reach a considerable level (Abad, *et al.*, 2008). As long as wind power penetration is insignificant, SGs determine the overall dynamic behavior of power systems, but introduction of large amounts of new wind generation can affect the stability of power systems (Saad-Saoud *et al.*, 1998). These effects in the fields of frequency stability (Salman and Teo, 2003), transient stability, voltage stability (Slootweg, 2002) and small signal stability have been treated and addressed in recent research. Among them, the small signal stability problem of power systems with high penetration levels of wind power is one of the major challenging fields. Small signal stability is the ability of the power system to maintain synchronism when subjected to small disturbances. In today's power systems, the small signal stability problem is usually the lack of sufficient damping torque for system oscillations (Zhou *et al.*, 2004). It is important to propose a suitable method to enhance flexible power flow control, damping of power system oscillations, and improving transient stability of the system. Most of the flexible ac transmission system (FACTS) devices have been used for damping of power system oscillations and flexible power control (Wang, 1999). FACTS with energy storage system such as static synchronous compensator (STATCOM), static var compensator (SVC) with super conducting magnetic energy storage system (SMES), and energy capacitor system (ECS) composed of double layer capacitor have already been proposed to improve transient stability of fixed speed wind farm (Muyeen *et al.*, 2006; Zhou *et al.*,

**Research Article**

2004; Muyeen et al., 2008). However, the installation of FACTS devices at a wind farm composed of fixed speed wind generators increases the system overall cost.

**Static Var Compensator, Modeling and System Control**

A SVC is a shunt connected power electronics based device which works by injecting reactive current into the load, thereby supporting the voltage and mitigating the voltage sag. SVCs may or may not include energy storage, with those systems which include storage being capable of mitigating deeper and longer voltage sags. Figure 1 shows a block diagram of a SVC.



**Figure 1: Basic structure of SVC**

This model is based on representing the FACTS controller as variable impedance. A fixed capacitor (FC) with a thyristor controlled reactor (FC–TCR) configuration of the SVC is used in this analysis.

The controller is composed of a fixed capacitor ( $X_c$ ); fixed reactor ( $X_l$ ); and a bi-directional thyristor valve that is composed of two thyristors. The SVC is usually connected to the transmission system through a step-down transformer which can be treated as other transformers. This model can be represented with the following equations:

$$V - V_{ref} + X_{SL} I = 0$$

$$B_e - (2\alpha - \sin \alpha - \pi(2 - \frac{X_l}{X_c}))\pi X_l = 0$$

$$I_{SVC} - V_i B_e = 0$$

$$Q_{SVC} - V_i^2 = 0$$

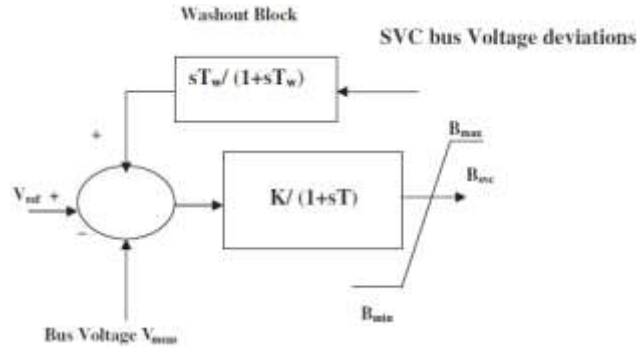
$V_i$ ; SVC is the voltage magnitude of the bus at which SVC is connected,  $V_{SVC}$  is the voltage across the controller,  $X_{TH}$  is the impedance of the step-down transformer,  $Q_{SVC}$  is the reactive power that the SVC injects into the power network,  $I_{SVC}$  is the current through SVC,  $B_e$  is the equivalent admittance of SVC,  $V_{SVCref}$ ; is a reference voltage for the controller,  $X_{SL}$  is the SVC control slope,  $\alpha_{SVC}$  is the firing angle and  $\alpha_{SVCmin}$  ;  $\alpha_{SVCmax}$  represent the lower and upper limits on the firing angle (Boynuegri et al., 2012). Assuming balanced, fundamental frequency operation an adequate stability model can be developed assuming sinusoidal voltages (Molinas et al., 2008). SVC is basically a shunt connected static var generator/absorber whose output is adjusted to exchange capacitive or inductive current so as to maintain or control specific power system variables; typically, the controlled variable is the SVC bus voltage. One of the major reasons for installing an SVC is to improve dynamic voltage control, and thus, increase system load ability. An additional stabilizing signal, and supplementary control superimposed on the voltage control loop of an SVC can provide damping of system oscillations during transient faults and disturbances (Figure 2).

The state equation for SVC can be written as:

**Research Article**

$$B_{SVC} = \frac{K}{T}(V_{ref} - V_{meas} + u) - \frac{1}{T}V_{SVC}$$

where  $B_{SVC}$  the SVC susceptance,  $u$  is the stabilizing loop output. Here,  $V_{ref}$  is chosen as 1.0 per-unit and  $V_{meas}$  is the PCC voltage.



**Figure 2: Structure of SVC controller with stabilizing loop**

**Parameter Tuning of Facts Controllers**

The parameter tuning of FACTS controllers is an important problem as the stabilizing effect will depend on the gain of the controllers.

The tuning is posed as an optimization problem with the objective as minimizing the oscillations of PCC voltage from the desired value and is given by:

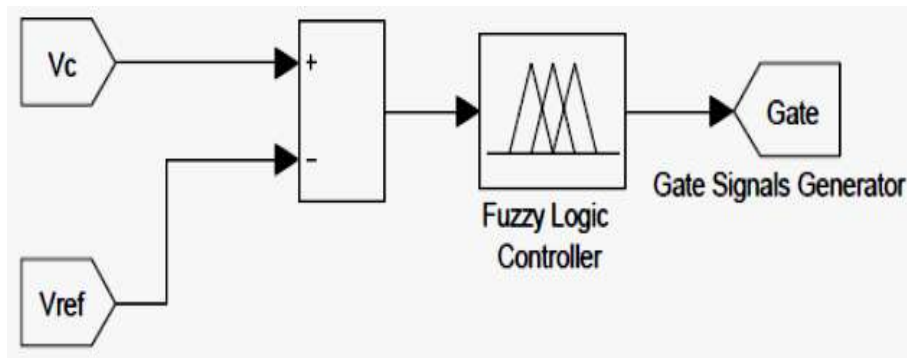
$$\text{Minimize } F = \sum_k [(V_{ref} - V_k)^2 + (\omega_{ref} - \omega_k)^2]$$

$$K_{min} \leq K \leq K_{max}$$

where  $V_{ref} = 1.0$  per-unit and  $F$  is the sum squared deviation index of the PCC voltage. The optimization problem is solved using sequential quadratic programming in MATLAB.

**Fuzzy Control Algorithm**

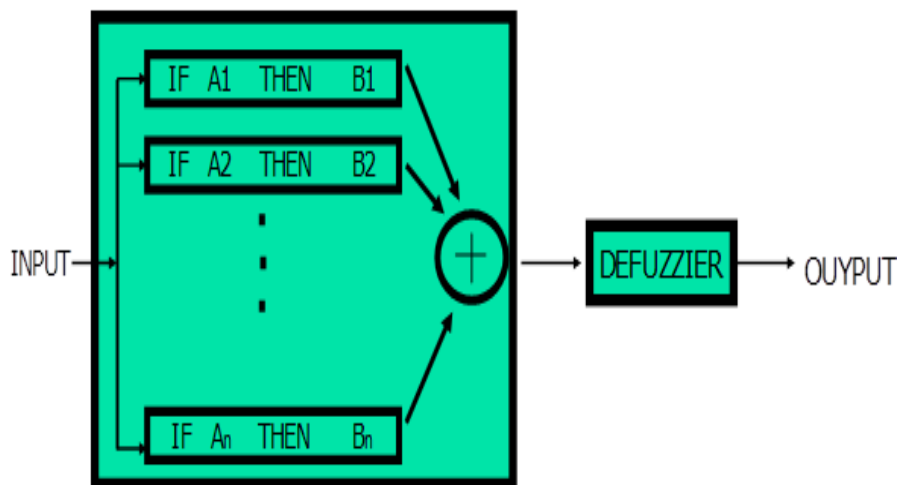
As shown in Figure3 the fuzzy control algorithm is implemented to control the load phase voltage based on processing of the voltage error  $e(t)$  and its variation  $\Delta e(t)$  in order to improve the dynamic of SAF.



**Figure 3: Fuzzy controller structure block diagram**

The main advantages of fuzzy control are its linguistic description, independence of mathematical model, robustness, and its universal approximation (Al-Kandari AM., 2006). As shown in Figure4 the fuzzy logic controller is consisting of four stages: fuzzification, knowledge base, inference mechanism and defuzzification.

**Research Article**



**Figure 4: the basic scheme of fuzzy logic controller**

The knowledge base is composed of a data base and rule base and is designed to obtain good dynamic response under uncertainty in process parameters and external disturbances.

As shown in Figure4 the data base consisting of input and output membership functions provides information for the appropriate Fuzzification operations, the inference mechanism and defuzzification. The inference mechanism uses a collection of linguistic rules to convert the input conditions into a fuzzified output. Finally, defuzzification is used to convert the fuzzy outputs into control signals.

In designing of a fuzzy control system, the formulation of its rule set plays a key role in improvement of the system performance. These rules are listed in Table 1.

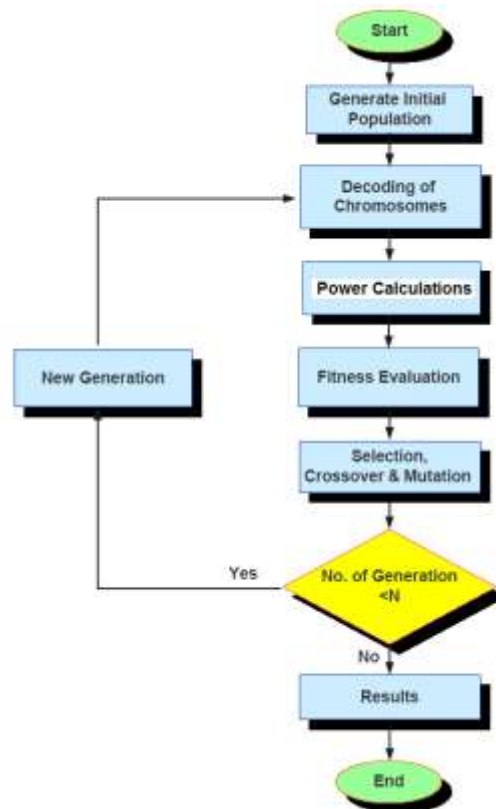
**Table 1: Fuzzy rule set used in fuzzy controller of series active filter**

e(n)	Ce(n)							
	NB	NM	NS	ZE	PS	PM	PB	
NB	NB	NB	NB	NB	NM	NS	ZE	
NM	NB	NB	NB	NM	NS	ZE	PS	
NS	NB	NB	NM	NS	ZE	PS	PM	
ZE	NB	NM	NS	ZE	PS	PM	PB	
PS	NM	NS	ZE	PS	PM	PB	PB	
PM	NS	ZE	PS	PM	PB	PB	PB	
PB	ZE	PS	PM	PB	PB	PB	PB	

**Genetic Algorithm**

As shown in Figure 5 Genetic Algorithm (GA) comprises three different phases of search. The first is the production operator which makes one or more copies of any individual that possesses a high fitness value (Deependra *et al.*, 2007). The second operator is the recombination or crossover operator. This operator selects two individuals within the generation and a crossover site and carries out a swapping operation of the string bits to the right hand side of the crossover site of both individuals. Crossover operations synthesize bits of knowledge gained from both parents exhibiting better than average performance. The third operator is the 'mutation', acts as a background operator and is used to explore some of the invested points in the search space by randomly flipping a 'bit' in a population of strings.

**Research Article**

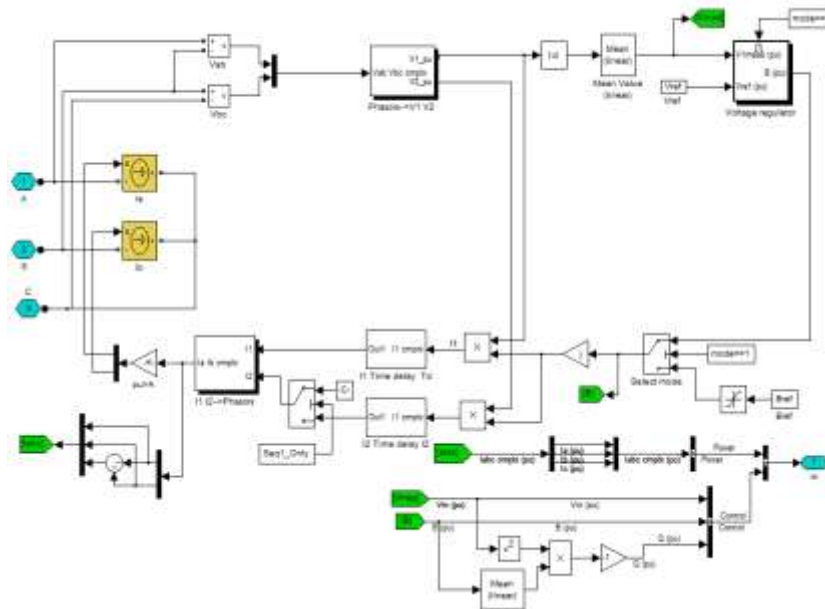


**Figure 5: The block diagram of GA based optimization problem**

**RESULTS AND DISCUSSION**

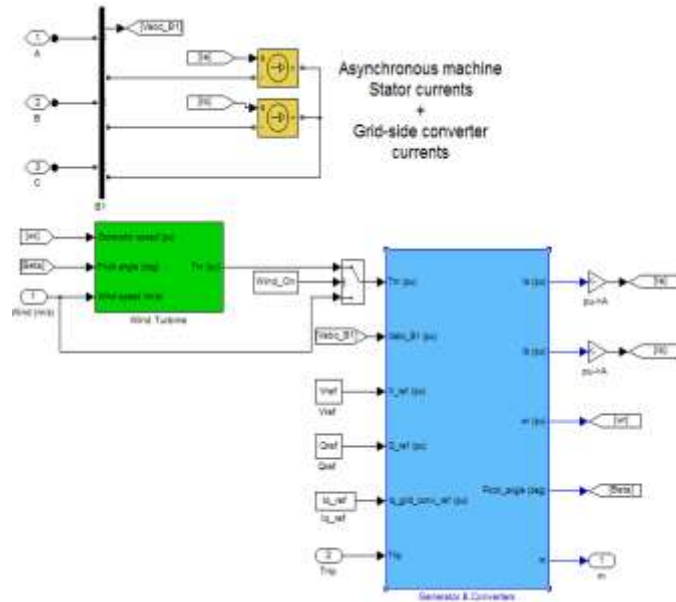
**Simulation and Results**

In this section, the SVC configuration based fuzzy controller is shown in Figure6. The model of wind turbine is indicated in Figure 7.

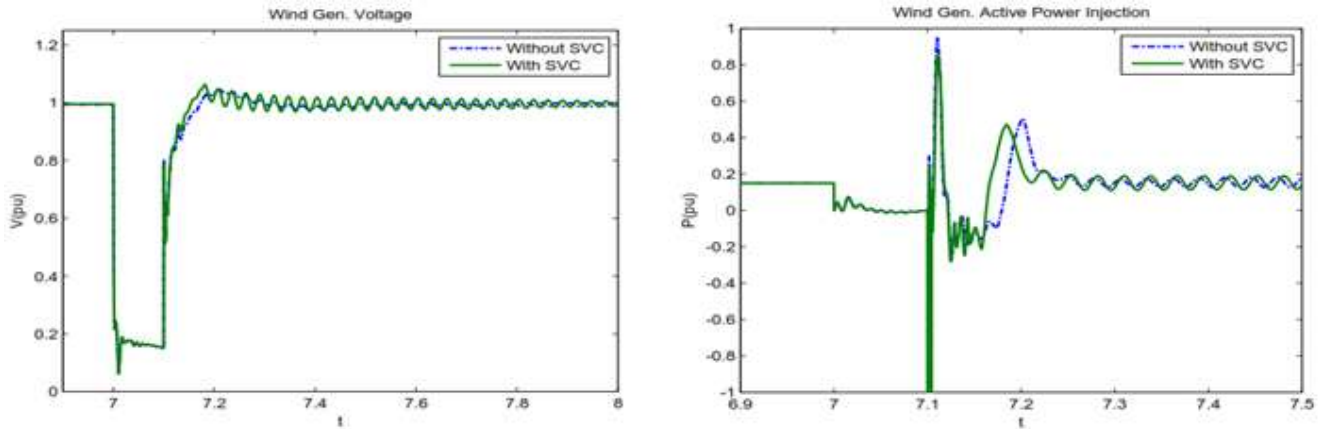


**Figure 6: The SVC configuration**

**Research Article**



**Figure 7: The model of wind turbine**



**Figure 8: Voltage and active power injection of generator G1 before and after SVC**

The voltage and active power injected by generator while connecting of wind turbine to system, before and after connection of SVC is presented in Figure 8.

**REFERENCES**

**Abad G, Rodríguez MA and Poza J (2008).** Two-Level VSC-based predictive direct power control of the doubly fed induction machine with reduced power ripple at low constant switching frequency. *IEEE Transactions on Energy Conversion* **23**(2) 570-80.

**Al-Kandari AM, Soliman SA and Alammari RA (2006).** Power quality analysis based on fuzzy estimation algorithm: voltage flicker measurements. *Electrical Power & Energy Systems Journal* **28**(10) 723–8.

**Boynuegri AR, Vural B, Tascikaraoglu A, Uzunoglu M and Yumurtacı R (2012).** Voltage regulation capability of a prototype Static VAR Compensator for wind applications, *Applied Energy* **93** 422–431.

**Deependra Singh, Devendr Singh and Verma KS (2007).** GA based Optimal Sizing & Placement of Distributed Generation for Loss Minimization, *Proceedings of World Academy of Science, Engineering and Technology* **26** 381-387.

### **Research Article**

- Litipu Z and Nagasaka K (2004).** Improve the reliability and environment of power system based on optimal allocation of WPG, *IEEE Proceedings of Power System Conference Exposed* **1** 524-532.
- Mehdi Samiei Sarkhanloo, Ahmad Sadeghi Yazdankhah and Rasool Kazemzadeh (2012).** A new control strategy for small wind farm with capabilities of supplying required reactive power and transient stability improvement, *Renewable Energy* **44** 32-39.
- Molinas M, Suul JA and Undeland T (2008).** Low voltage ride through of wind farms with cage generators: STATCOM versus SVC. *IEEE Trans Power Electron* **23**(3) 1104–17.
- Muyeen SM, Mannan MA, Ali MH, Takahashi R, Murata T and Tamura J (2006).** Stabilization of wind turbine generator system by STATCOM. *IEEJ Transactions on Power and Energy* **126-B**(10) 1073-82.
- Muyeen SM, Takahashi R, Ali MH, Murata T and Tamura J (2000)** Transient stability augmentation of power system including wind farms by using ECS. *IEEE Transactions on Power Systems* **23**(3) 1179-87.
- Saad-Saoud Z, Lisboa ML, Ekanayake JB, Jenkins N and Strbac G (1998).** Application of STATCOMs to wind farms, in: *IEEE Proceedings on Generation, Transmission, and Distribution Conference* **145** 511-516.
- Salman KS and Teo ALJ (2003).** Windmill modeling consideration and factors influencing the stability of a grid-connected wind power-based embedded generator, *IEEE Transactions on Power Systems* **18** 793–802.
- Slootweg JG and Kling WL (2002).** Impacts of distributed generation on power system transient stability. *IEEE Power Engineering Society Summer Meeting* **2** 862-7.
- Wang HF, Li F and Cameron RG (1999).** Facts control design based on power system nonparametric models. *Proceedings of Institute of Electrical Engineering Generation Transmission and Distribution* **146**(5) 409-15.
- Zhou F, Joos G, Abbey C, Jiao L and Ooi BT (2004).** Use of large capacity SMES to improve the power quality and stability of wind farms. *Proceedings of IEEE Power Engineering Society General Meeting* **2** 2025-30.